

PILOT'S LANDING

A PLANNED GATED COMMUNITY APPROXIMATELY 45 MINUTES WEST OF AUSTIN, TEXAS IN BURNET COUNTY.

LOCATED ON LAKE TRAVIS SURROUNDED BY TEXAS HILL COUNTRY VIEWS.

ONE HALF MILE FROM SPICEWOOD AIRPORT (88R)

WWW.SPICEWOODAIRPORT.COM

AMENITIES:

UNDERGROUND UTILITIES:

- WATER DISTRICT
- LAKE WATER (IRRIGATION)
- SEWER
- PHONE
- ELECTRICITY

ESTATE SIZE LOTS WITH LAKE FRONT VIEWS.

GRANITE, LIMESTONE AND WROUGHT IRON ENTRY, WITH A KEY PAD GATE.

BOAT MARINA WITH PARKING LOT AND CABLE TRAM FROM THE BLUFF TO THE LAKE.

PRIVATE ASPHALT STREET WITH CONCRETE RIBBON CURBING.

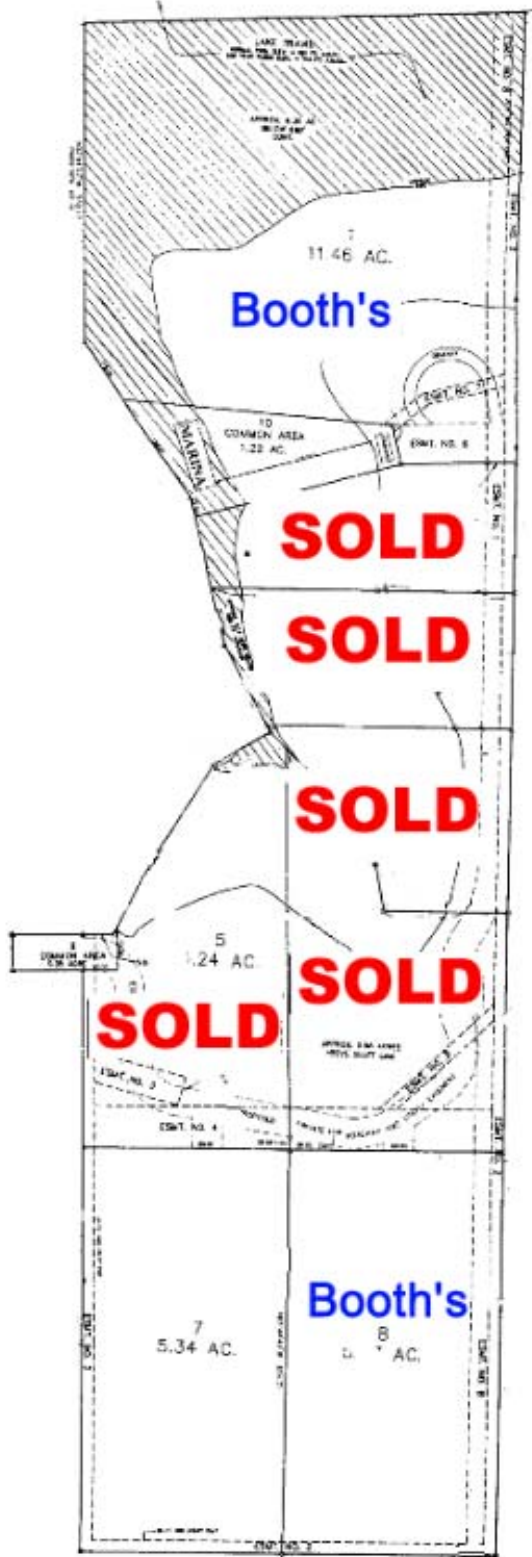
MOST OF THE DEVELOPMENT PERIMETER IS FENCED WITH LOW- MAINTENANCE, PLASTIC, FOUR RAIL, GRAY FENCE.

FORESTED WITH OAKS, HACKBERRIES, JUNIPERS, MOUNTAIN LAURELS, ELMS AND OTHERS TREES.

TRACT PRICES:

- TRACT #1 --- **BOOTH'S HOME**
- TRACT #2 --- **LERNER'S HOME**
- TRACT #3 --- **DAVIS'S HOME**
- TRACT #4 --- **THOMPSON'S TRACT**
- TRACT #5 --- **DAVIS'S TRACT**
- TRACT #6 --- **DAVIS'S TRACT**
- [TRACT #7](#) --- **\$349,900**
- TRACT #8 --- **PILOT'S PUB LODGE**

PRICE OF LOT INCLUDES 1 BOAT SLIP, WATER TAP AND IMPACT FEE



RAY & MARY BOOTH
515 CONTRAILS WAY
SPICEWOOD, TEXAS 78669
(830) 693-6235
E-mail booth@tstar.net

